



Chessington Road, West Ewell

The **PERSONAL** Agent

£200,000

Leasehold

- ***INVESTMENT OPPORTUNITY - CASH BUYERS ONLY***
- First Floor Apartment
- Two Double Bedrooms
- Modern Kitchen
- Modern Family Bathroom
- A Short Walk From Ewell Village
- Bright Reception Room
- Easy Access To Local Amenities
- Private Car Parking Space
- Viewing By Appointment

INVESTMENT OPPORTUNITY - CASH BUYERS ONLY

The Personal Agent are delighted to welcome to the market this spacious and well presented two bedroom first floor apartment within a short walk of Ewell West Station with its 34 minute service to London Waterloo and close to the historic and picturesque Ewell Village.

The property itself boasts a private front door which opens into a hallway where you can access the bright reception room, modern kitchen as well as the modern family bathroom and two double bedrooms.



The property goes on to enjoy low monthly charges along with access to a private car parking space at the rear of the building. The current lease is 17 years, however there is the potential for the current vendor to increase the lease length upon completion, subject to further conversations.

With so much to offer we recommend your earliest viewing to avoid missing out on a home sure to have high levels of interest.

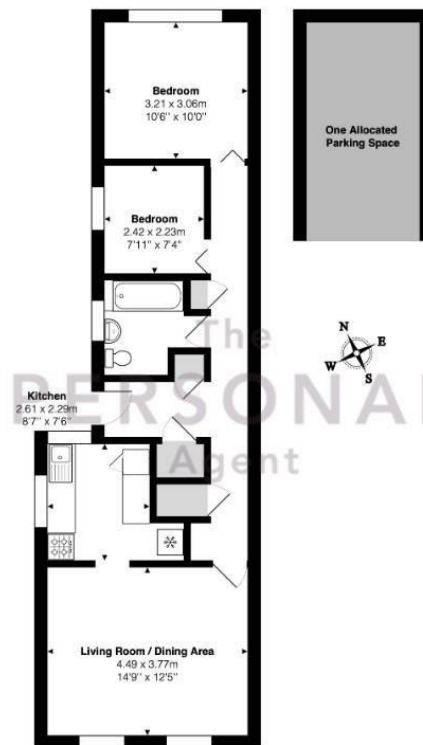
The picturesque Ewell Village under / less than a mile away and offers a variety of shops, restaurants, cafés and pubs. The Bourne Hall hosts a public library, subterranean theatre,

gymnasium, café, and local museum, it regularly holds gatherings such as fairs. In the heart of the village lies the Hogsmill river leading up to the nature reserve. There are a range of popular local schools and of course both Ewell East and West stations with their connections to London.

Nearby Epsom is a busier market town and has the Ashley Centre - a covered shopping mall and Epsom Playhouse which offers a wide range of entertainment, including films and concerts. Also close by is Epsom Downs, the home of The Derby. The M25 (Junction 9) is a short drive away giving access to both Heathrow and Gatwick.







First Floor Maisonette

Chessington Road, Ewell, Epsom

Total Area: 59.8 m² ... 643 ft² (excluding one allocated parking space)

FOR ILLUSTRATIVE PURPOSES ONLY.

Whilst every attempt has been made to ensure the accuracy of the floor plan shown, all measurements, positioning, fixtures, features, fittings and any other data shown are an approximate interpretation for illustrative purposes only and are not to scale.

No responsibility is taken for any error, omission, mis-statement or use of data shown.

The above statement applies to both 'Sill Moving London LTD' and the Company or individual displaying this floor plan.

Unauthorised reproduction prohibited.

© Sill Moving London LTD (www.sillmoving.london)

The
PERSONAL
Agent

Energy Efficiency Rating		
	Current	Potential
Very energy efficient - lower running costs		
(92 plus) A		
(81-91) B		
(69-80) C		
(55-68) D		
(39-54) E		
(21-38) F		
(1-20) G		
Not energy efficient - higher running costs		
	57	72
England & Wales		EU Directive 2002/91/EC

EPSOM OFFICE
2 West Street
Epsom, Surrey, KT18 7RG
01372 745 850

STONELEIGH/EWELL OFFICE
62 Stoneleigh Broadway
Stoneleigh, Surrey, KT17 2HS
020 8393 9411

BANSTEAD OFFICE
141 High Street
Banstead, Surrey, SM7 2NS
01737 333 699

TADWORTH OFFICE
Station Approach Road
Tadworth, Surrey, KT20 5AG
01737 814 900

LETTINGS & MANAGEMENT
157 High Street
Epsom, Surrey KT19 8EW
01372 726 666

The Personal Agent Ltd. Registered office: 2A Boston Rd, Henley-on-Thames RG9 1DY.
Registered in England No. 4398817.



The
PERSONAL
Agent

Please Note: Whilst every attempt has been made to ensure the accuracy of the floorplans contained here, measurements of doors, windows and room areas are approximate and no responsibility is taken for any error, omission or mis-statement. These plans are for representation purposes only and should be used as such by and prospective purchaser. The services, systems and appliances listed in the specification have not been tested by The Personal Agent and no guarantee as to their operating ability or their efficiency can be given. All images and text used to advertise our properties are for the sole use of The Personal Agent Ltd.

